

## Box Contents

- Console Mast 112738-001
- Base (xR6000 shown)
- Arm Pivot Cover—Large (Right and Left) 113185-001 113183-001
- Arm Pivot Cover—Small (Right and Left) 113182-001 113184-001
- Side Step (2) (xR6000s only) 113208-001
- Foot Pedals (Right and Left) 111660-001 116661-001
- Moving Handlebars (Right and Left) 112509-001 112508-001
- Seat Back 112832-001
- Foot Rest/Accessory Tray 112824-001
- Hardware Pack 112844-001 (not shown)
- Information Packet 113201-001 Assembly 107786-001 Safety Instructions

## Hardware Pack

- B-1 (1) 112734-001 6mm
- B-2 (1) 112223-001
- B-3 (4) 101295-001 6mm
- B-4 (2) 109989-001 13mm
- B-5 (4) 104757-001
- B-6 (2) 103743-001 13mm
- B-7 (2) 103393-001 13mm
- B-8 (4) 100780-001 #2 Phillips
- B-9 (4) 8022048 5mm
- B-10 (2) 101277-001
- B-11 (4) 105717-001 6mm
- B-12 (2) 112736-001
- B-13 (2) 113194-001
- 5mm Hex (1) 103083-001
- 6mm Hex (1) 8008949

**Tools Required:**

- 5mm hex wrench (provided)
- 6mm hex wrench (provided)
- #2 Phillips screwdriver
- Flat head screwdriver
- 13mm wrench (2)
- 17mm wrench
- Rubber mallet (optional)

## Standard Console Box Contents

- Standard Console (Front and Back) 8020168
- Hardware Pack 110622-001
  - C-1 (10) 100780-001 #2 Phillips
- Information Packet (attached to console)
  - 110601-001 Notice to Installers
  - 111289-001 xR6000 Console Guide & Setup Instructions—Standard Console
  - 104198-001 Warranty
  - 101315-001 Registration Card

**Tools Required:**

- #2 Phillips Screwdriver

## Smart Console Box Contents

- Smart Console (Front and Back) 8019479
- Hardware Pack 110622-001
  - C-1 (10) 100780-001 #2 Phillips
- Power Switch 111032-001
- Information Packet (attached to console)
  - 110601-001 Notice to Installers
  - 111768-001 Console Guide & Set-up Instructions—Smart Console
  - 104198-001 Warranty
  - 101315-001 Registration Card
- Power Supply 112584-001 (may be boxed separately)
- Power Cord 107658-001 (may be boxed separately)

**Tools Required:**

- #2 Phillips Screwdriver

**⚠ Read and understand the "Product Safety Information" manual before assembly.**

**Remove all loose parts from packaging; use handle to lift rear of base and gently roll unit off shipping pallet.**

### A Install Seat

- Use 6mm hex wrench to remove bolt and washer from right side of seat back axle; slide axle out user left side.
- Position seat back; insert axle from left side through seat back bracket, aligning flat sides of axle and hole. Align washer and bolt with axle; tighten with 6mm hex wrench to 19 ft-lb.
- Insert spacer B-2 (quantity 1) through hole in damper. Tilt seat and align damper/spacer in seat bracket. Insert screw B-1 (quantity 1) through bracket and damper/spacer; tighten with 5mm hex wrench to 7 ft-lb.
- Test seat height and tilt adjustments to verify function of locking mechanisms (not shown). (On xR6000s, also test swivel mechanism.)

### B Install Mast

- Use #2 Phillips screwdriver to remove two screws securing front and rear top shrouds and mast boot. Set screws, shrouds, and mast boot aside (not shown).
- Remove twist tie securing cable bundle; tip mast upside down and route cables through hole in bottom of mast to top of mast.
- Slide mast over screws on base; insert screw B-3 (quantity 2) into holes in front of mast plate, tighten with 6mm hex wrench.
- Insert screw B-3 (quantity 2) into holes in top of mast plate. Use 6mm hex wrench to tighten **all 6 screws** to 30 ft-lb.
- Align bottom of front top shroud with base, then tip up into position. Position rear top shroud and mast boot, then secure both top shroud pieces using #2 Phillips screwdriver and two screws removed in step 1.

### C Install Console

**Standard Console**

- Separate console back from console front; set console back aside (not shown).
- Connect the C-SAFE cable from the mast cover to the console (cable not shown). **Note:** If you are installing a 900 MHz accessory, remove and discard the C-SAFE cable.
- Connect heart rate cable attached to heart rate board on console back to heart rate cable from mast (black, 6-pin connector).
- Make additional cable connections from mast to back of console:
  - Standard Console:** ① power, ② handlebars, ③ base, ④ LAN, ⑤ ground
  - Smart Console:** ① power, ② handlebars, ③ base, ④ LAN (leave ground unconnected)
- Routing loose cables to user front side of mast brackets, attach console front to top of mast with C-1 (quantity 4); tighten using Phillips #2 screwdriver. Remove screw securing mast cover to mast; retain screw. (If C-SAFE cable is in use, let mast cover hang from cable.)
- For Smart console only:** Install power switch; connect cable and power.
  - Remove rubber plug from mast cover (not shown).
  - Route two-connector end of switch cable (pre-connected to console) through the opening where plug was removed. Attach connectors to tabs on switch (either connector can go on either tab).
  - Press switch fully into opening of mast cover; let mast cover hang from cables.
  - Connect power cord and power supply. Plug into base of unit and wall socket to verify power to console. Unplug from wall socket before continuing to step D.

**Smart Console**

#### 4 Standard Console

- Power for Accessories (unused) ① Power (white, 4-pin)
- Audio for Accessories (unused)
- Reserved for Software Field Update (black)
- Reserved (unused)
- ② Handlebar Control (white, 7-pin)
- ③ Console to Base (white, 14-pin)
- ④ LAN (RS-232)
- ⑤ Console Ground (metal; green wire from mast)
- C-SAFE (Connect from mast cover in Step ②)

#### 4 Smart Console

- Power for Accessories (unused) ① Power (white, 4-pin)
- ④ LAN (RS-232) (on Android board underneath)
- ② Handlebar Control (white, 7-pin)
- C-SAFE (Connect from mast cover in Step ②)
- ③ Console to Base (white, 14-pin)



If you have the optional **Personal Viewing System (PVS) accessory**, refer to **Personal Viewing System (PVS) Assembly Instructions** located in the box with your PVS accessory, then return to these instructions to complete final assembly.

If you have the optional **900 MHz accessory**, refer to **900 MHz Assembly Instructions** located in the box with your 900 MHz accessory, then return to these instructions to complete final assembly.

## D

### Connect Battery & Attach Moving Handlebars

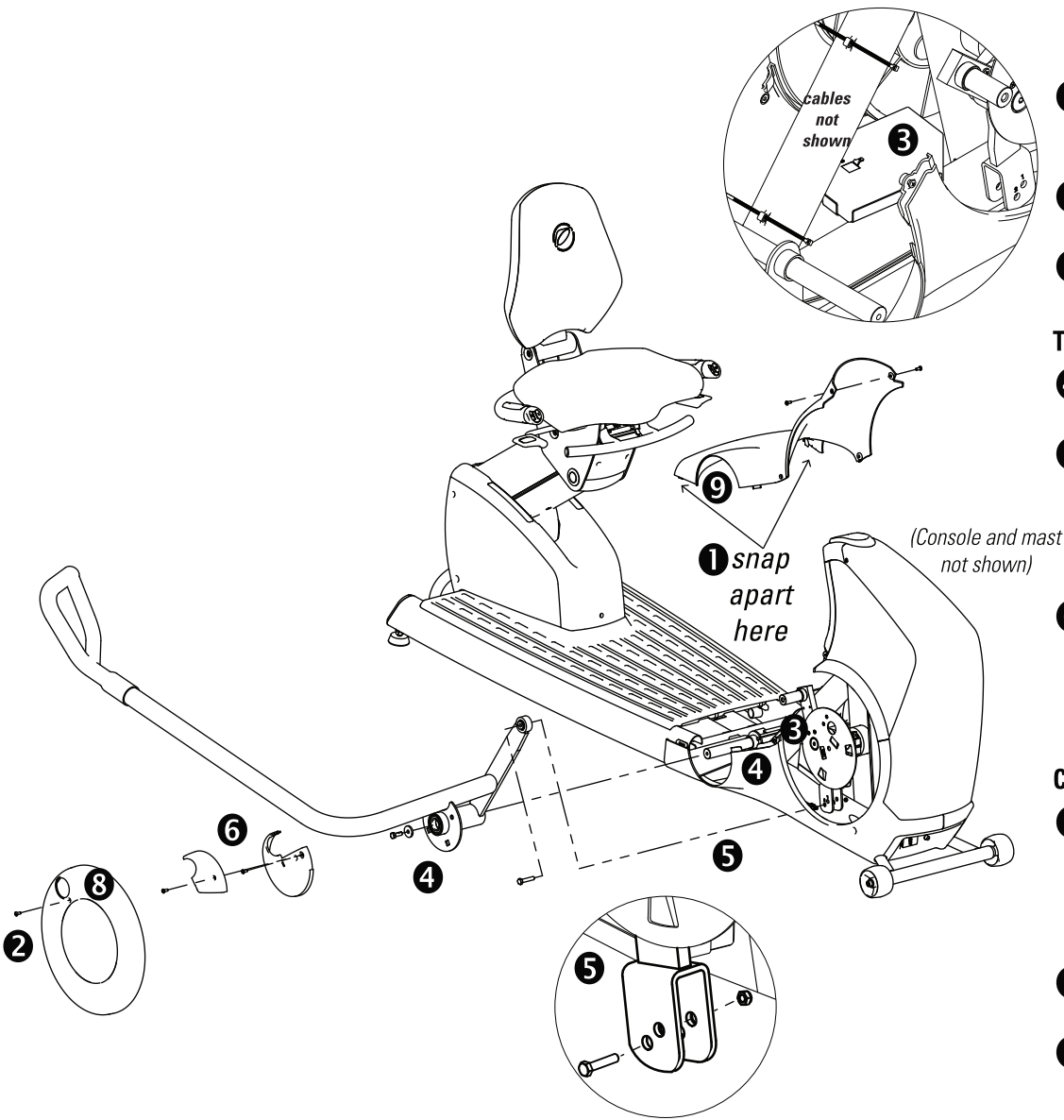
- 1 Use #2 Phillips screwdriver to remove 4 screws securing battery access panel. Use flat screwdriver at the side corner seams to gently unsnap bottom of panel; remove from unit and set aside with screws.
- 2 Use #2 Phillips screwdriver to remove 1 screw securing each crank arm cover; turn each cover counter-clockwise to remove and set aside with screws.
- 3 Connect cable on battery to cable in base (if you have not already done so during installation of PVS or 900MHz accessory). Connect power cord to wall socket.

#### To install moving handlebar:

- 4 Place washer B-5 on bolt B-4 (quantity 1 each); attach moving handlebar at hub with B-4/B-5 assembly and tighten with 13mm wrench to 19 ft-lb.
- 5 Position pedal crank axle at top-most position. Insert arm link of moving handlebar into arm link bracket, aligned with hole #1 on bracket. From the outside toward the center of the unit, insert screw B-6 (quantity 1) into arm link bracket and through arm link and nut B-7; tighten with two 13mm wrenches to 17 ft-lb. **For a longer reach, use hole #2 in the arm link bracket. You must use the same hole (#1 or #2) on both handlebars.**
- 6 Position large arm pivot cover around handlebar shaft and slide down to hub, inserting posts on pivot cover into square holes in hub. Use #2 Phillips screwdriver to secure large arm pivot cover to hub with B-8 (quantity 1). Press tabs of small arm pivot cover into slots in large arm pivot cover. Use #2 Phillips screwdriver to secure small arm pivot cover with B-8 (quantity 1).

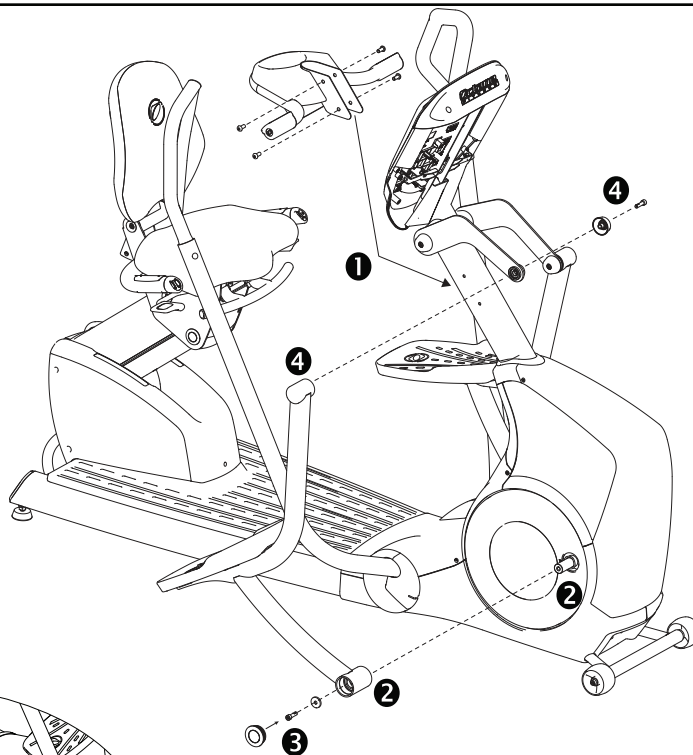
#### Complete steps 4-6 for second moving handlebar.

- 7 **Verify that you have properly connected the battery (per step 1). Then, move handlebars back and forth to check console power (not shown).**  
*For standard console:* Verify console powers up and stays lit for more than 5 seconds. *For smart console:* Press power switch to start console and verify xR6000 landing screen displays.
- 8 Position each crank arm cover, turning it clockwise to lock into place, then secure using #2 Phillips screwdriver and screws removed in step 2.
- 9 Position bottom of battery access panel and snap into place, then press top of panel into place. Use #2 Phillips screwdriver and secure with 4 screws removed in step 1.

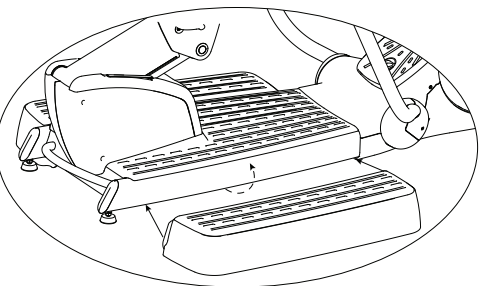


## E

### Attach Foot Pedals & Foot Rest



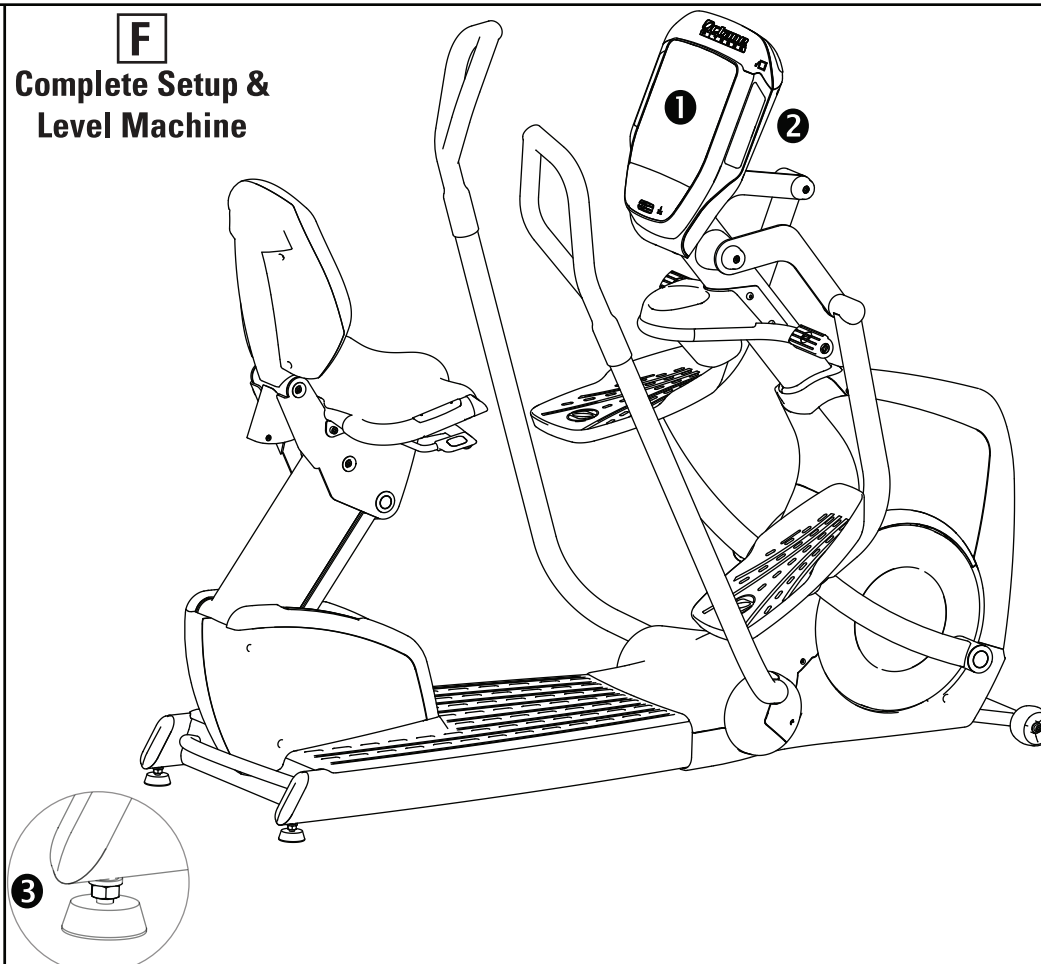
#### 5 Install Side Steps (xR6000s only)



- 1 With upper pedal links positioned on front side of mast post, attach foot rest bracket to mast with screw B-9 (quantity 4); tighten all 4 screws with 5mm hex wrench until tight.
- To install foot pedal:**
- 2 Place wave washer B-10 (quantity 1) on pedal crank axle, then press lower end of foot pedal onto pedal crank axle. (Use a rubber mallet to assist if needed.)
  - 3 Place washer B-5 onto screw B-11 (quantity 1 each). Insert B-11/B-5 assembly into lower hub and into pedal crank axle; tighten with 6mm hex wrench to 19 ft-lb. Press cap B-12 into place in lower foot pedal hub.
  - 4 Place cap B-13 onto screw B-11 (quantity 1 each). Insert B-11/B-13 assembly through upper pedal link into upper foot pedal hub; tighten with 6mm hex wrench to 19 ft-lb.
- Repeat steps 2-4 for second foot pedal.**
- 5 **For xR6000s Only:** Place side step next to one side of the unit with back of side step aligned with back of foot platform. Carefully tip unit away from you and push side step under rail of unit. Lower unit onto side step channel. Repeat for second side step.

## F

### Complete Setup & Level Machine



- 1 Complete Console Setup according to instructions found in the Console Guide and Setup Instructions (Part Number 111289-001 – Standard Console or Part Number 111768-001 – Smart Console).
- 2 Use a #2 Phillips screwdriver to attach back cover to console with C-1 (quantity 6); tighten. Reattach mast cover to mast with screw removed in step C-5, taking care to tuck cables out of the way before securing to mast. (Shown in Section C illustration).
- 3 Level machine; adjust and lock levelers using 17mm wrench. **Make sure nut is tight.**